



COMPANY PROFILE

ELSYS is a professional company in energy ICT,
IoT solutions and system building.

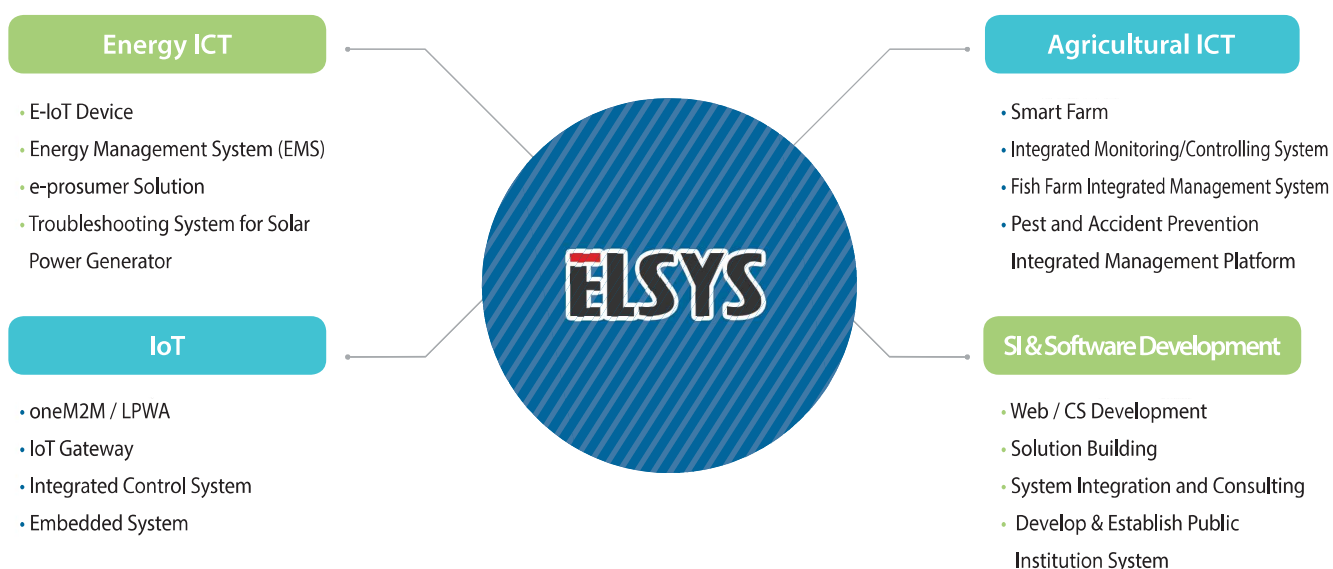
Energy ICT | Agricultural ICT | Renewable Energy Management
IoT Device | Embedded Device | Integrated Control System
Web Application Development | SI Development and Building

ELSYS (주)엘시스
ELSYS Co., Ltd.

Company Overview

Company Name	ELSYS	CEO	Soo-young Yang
Business Area	Energy ICT, Agricultural ICT, IoT Device, Embedded Device, Software Development and SI Building, etc.		
Address	#213, 2F, Jeonnam Techno Park, 1st Regional Industrial Complex 6 Block, Yulchon, Hodu-ri, Haeryong-myeon, Suncheon-si, Jeonnam		
Established Date	13 September 2005	Phone	Phone: (061)743-5333 Fax: (061)743-5331

Business Area



Organization



Certifications and Awards



Intellectual Property

• Patents (17 registered, 10 pending)

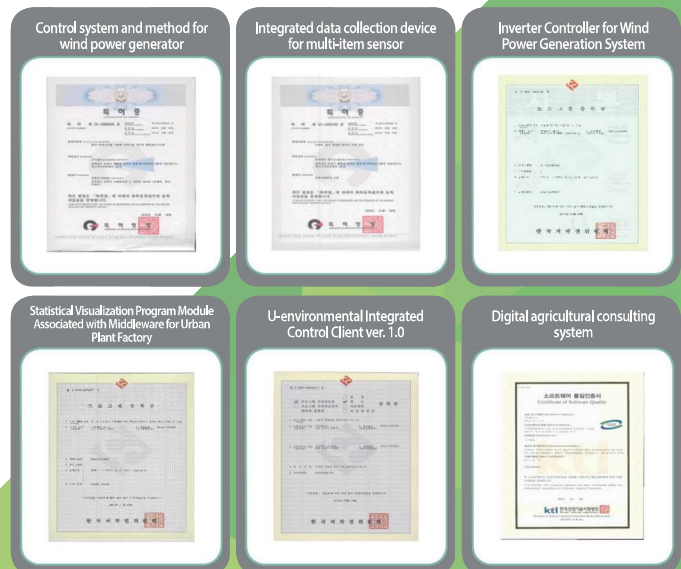
- Integrated data collection device for multi-item sensor
- Control system and method for wind power generator
- Error data identification method in sensor network environment
- Power control device for electric vehicle
- Power conversion device in electric vehicle
- Plant factory system for cultivating special crops
- Failure detection technique for stable operation of IoT-based integrated control system

• GS Certifications (5)

- Renewable energy monitoring
- Digital agricultural consulting system
- Cube map view

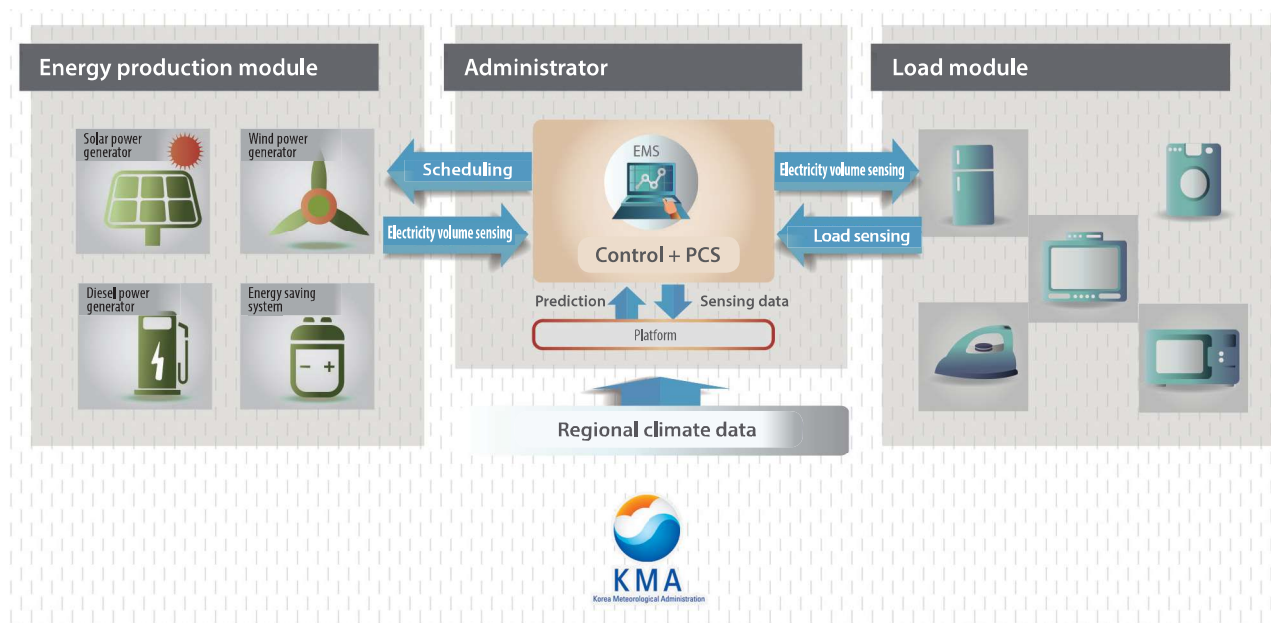
• Design Registrations (2)

• Program Registrations (74)

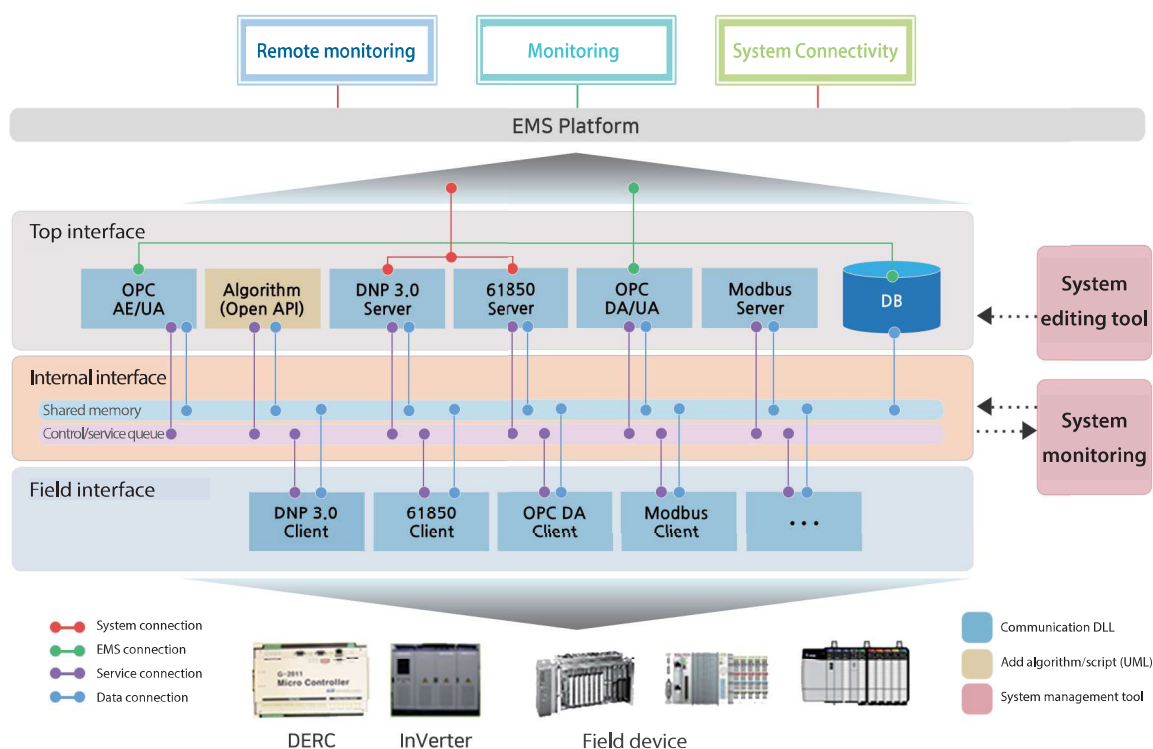


System Independent Smart Microgrid Operation Platform for Energy Independence

- Module system capable of diverse market environment
- Universal system with connectivity with diverse renewable energy devices
- IoT technology based intelligent electricity management by analyzing big data
- Software-oriented operation platform considering load capacity

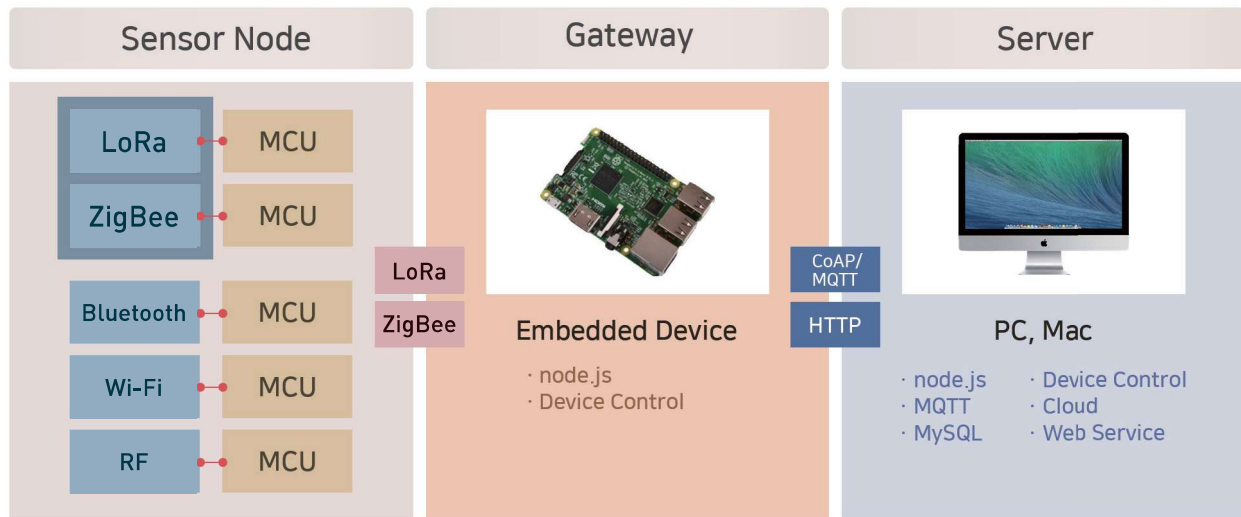


e-Middleware System

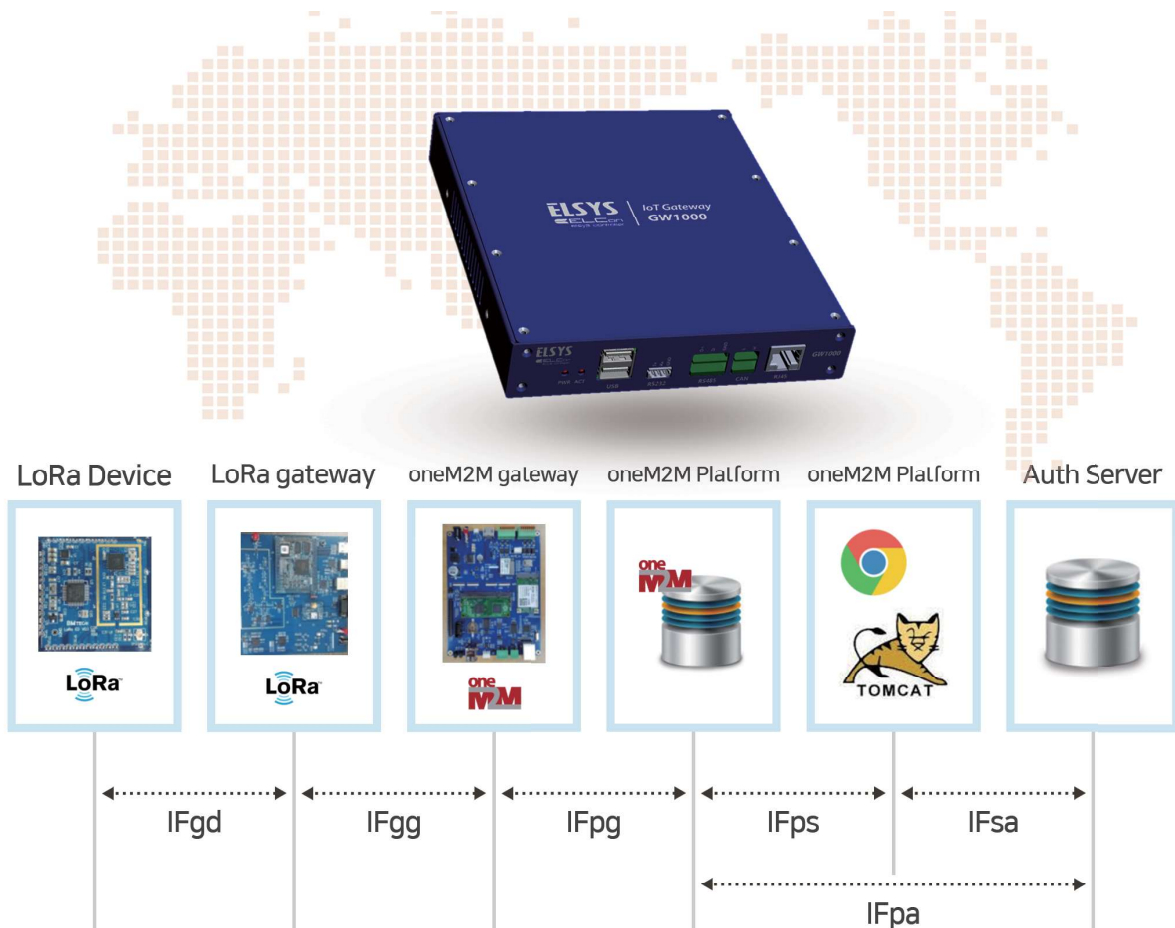


IoT Platform / Device

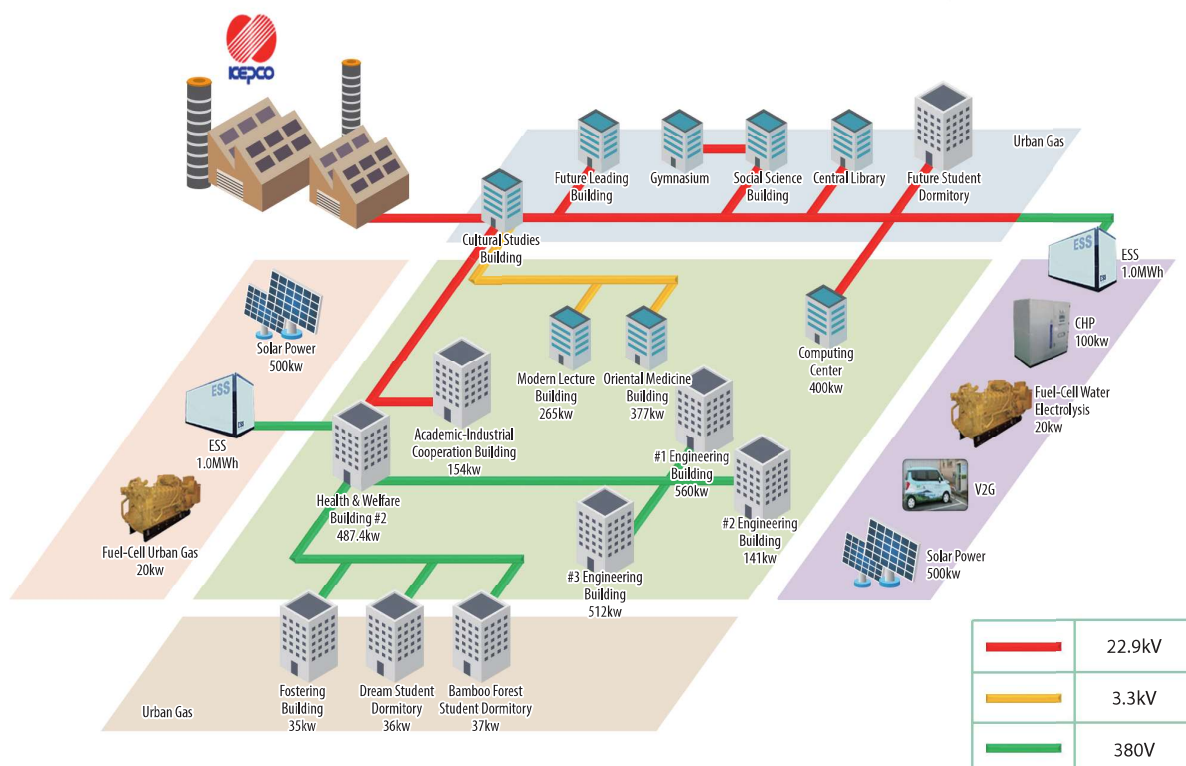
oneM2M based IoT system to lead connected world via internet through cloud, big data, smart device and sensor network technology



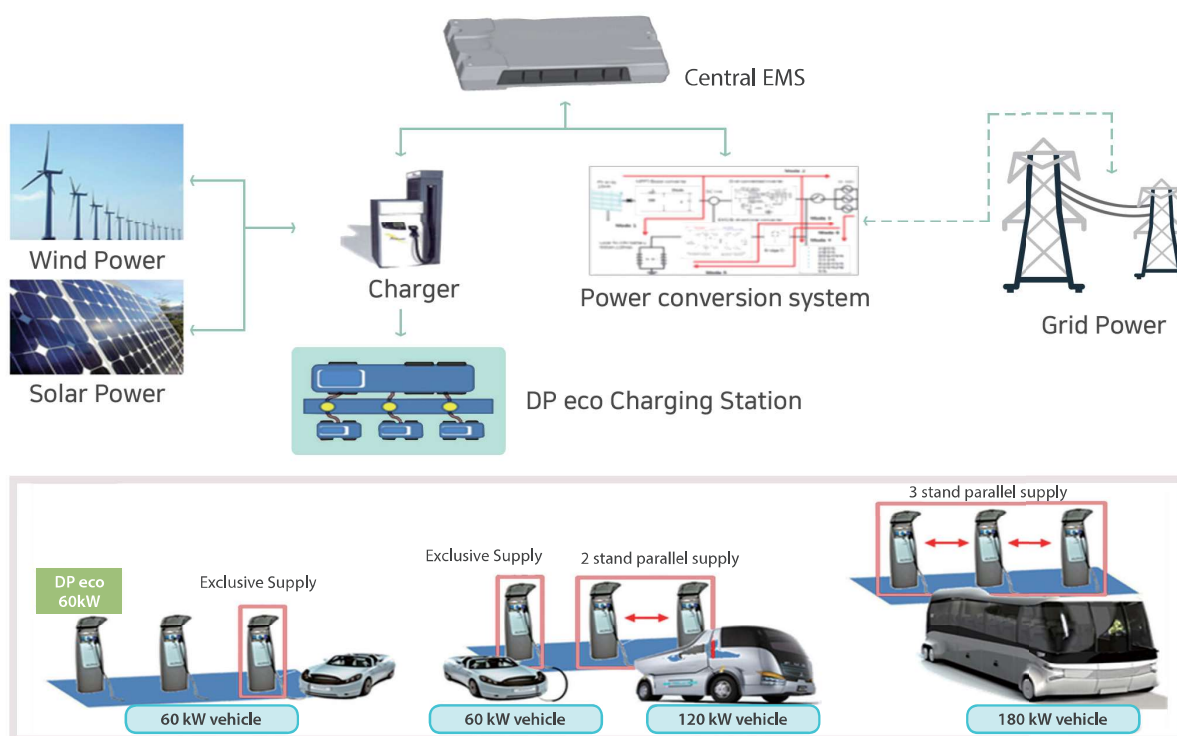
oneM2M based LoRa Multi Channel IoT Gateway



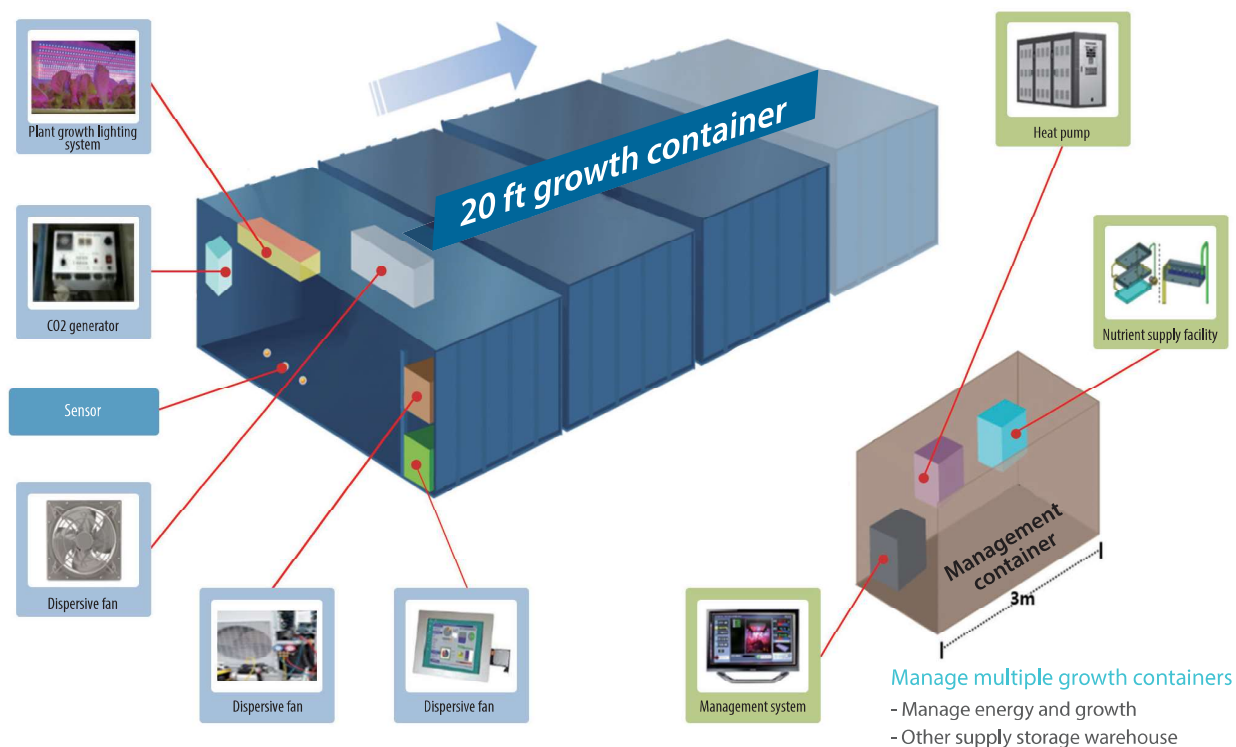
System Connected Micro Grid Smart Energy Campus



Universal Quick Charging System for Personal & Commercial Electric Vehicle



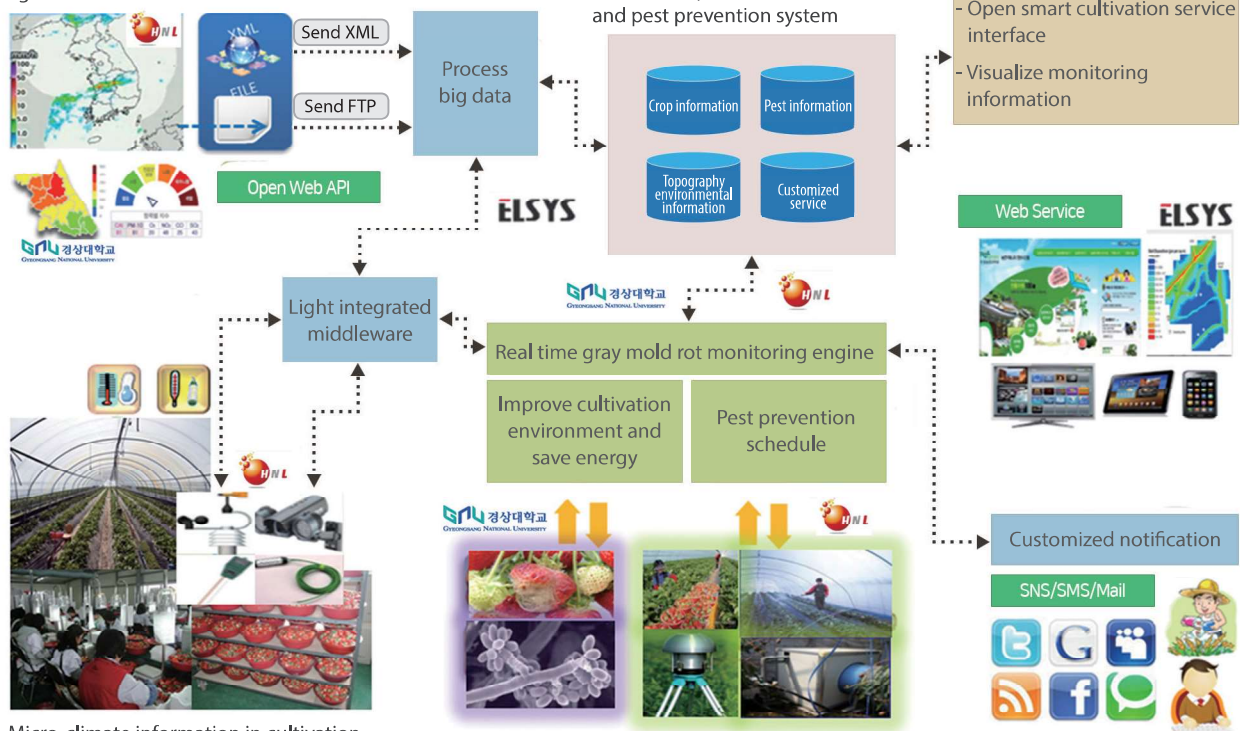
Container Type Smart Farm System



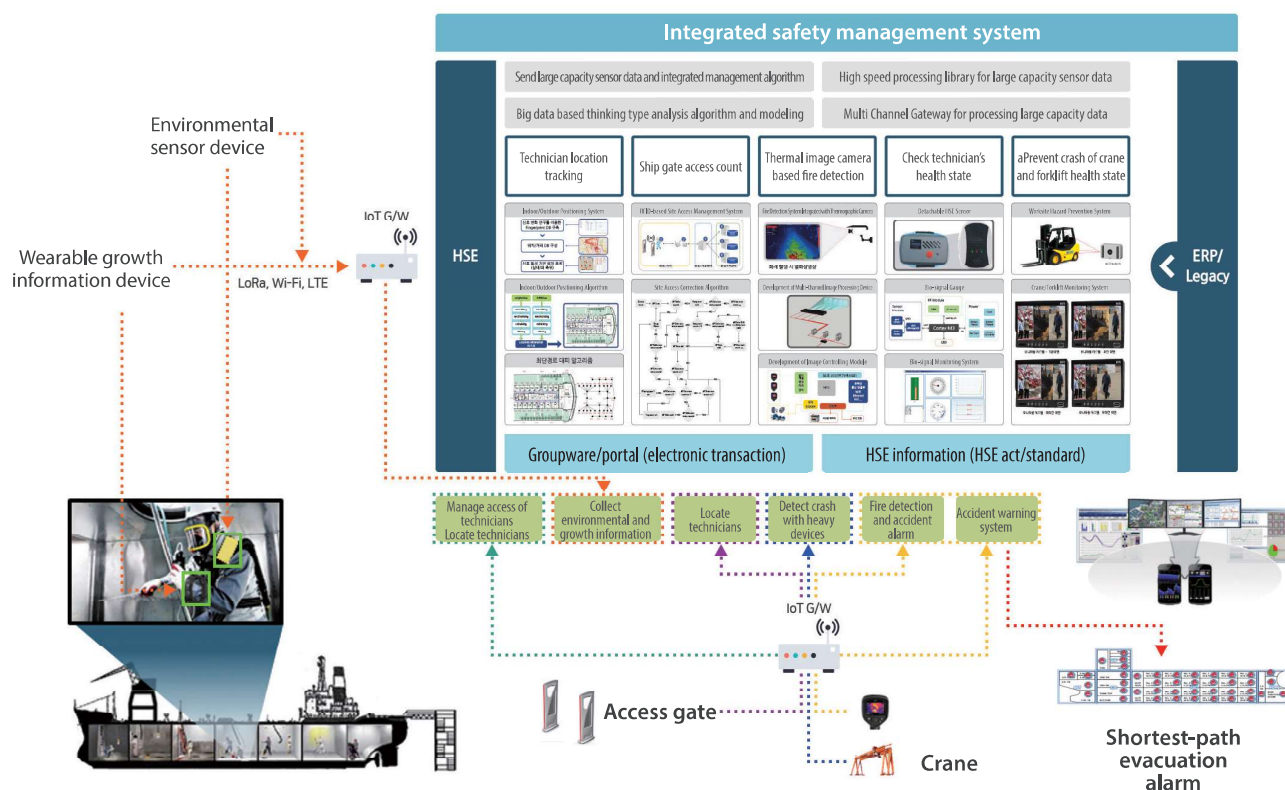
ICT Convergence Pest Monitoring System

Micro environment climate information and agricultural environment

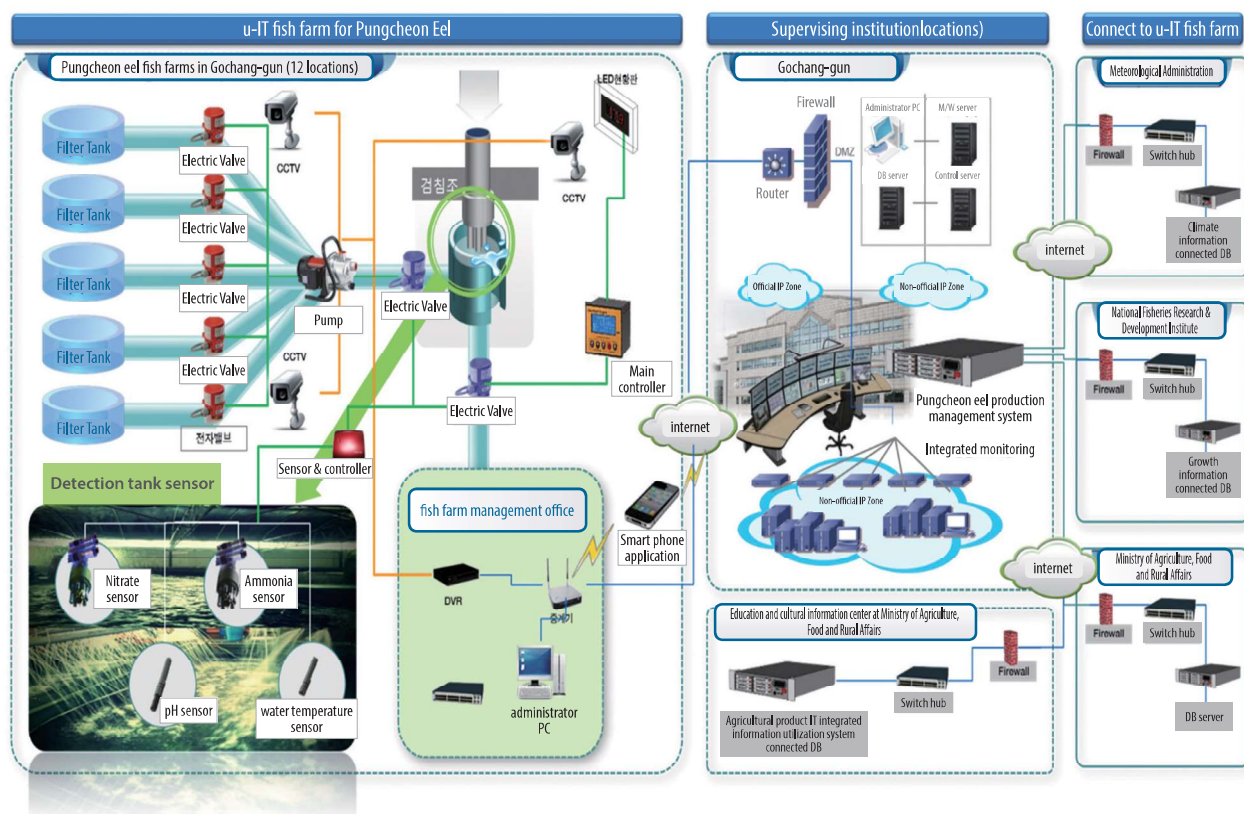
Establish strawberry cultivation information, selection site environment and pest prevention system



HSE System for Preventing Major Disasters and Accidents at Dockyard



ICT-based Integrated Management System for Fish Farm



SW Development Area



01. Build Website

Build integrated websites, mobile websites, and responsive websites, Acquire web accessibility mark

02. History Management System using IoT Platform

Process, manage and control information collected from temperature, humidity, soil and illumination sensors

03. LPWA (Low Power Wide Area) Communication Solution

Develop various solutions including integrated monitoring using sensors and LPWA communication and establish management system

04. Integrated Lecture Management System

Comprehensively manage lectures and institutions such as institution information, lecturers, lectures and setting up of lectures and provide statistics

05. QRMS (QR Code Management System)

Customized service for more useful and universal utilization of management of QR code by providing diverse categories

06. Block Personal Information (Website, Server, PC)

System that detects and blocks personal information in website notice boards, files in servers, DB and PC

07. Email/Document/Mobile Security

Integrated mobile device security solution including blocking spam mails, security of sent mails, mail archiving solution, secure web hard, mobile conference, corporate automatic backup solution, mobile device management and application security, and distribution of application

08. DB Encryption / DB Access Control

User access control and network-based DB access control on encryption field by security administrator

09. System Integration and Consulting

- Establish and maintain server (IBM, HP) and network (CISCO)
- Establishing and consulting network firewall, web firewall and network control system



Head Office

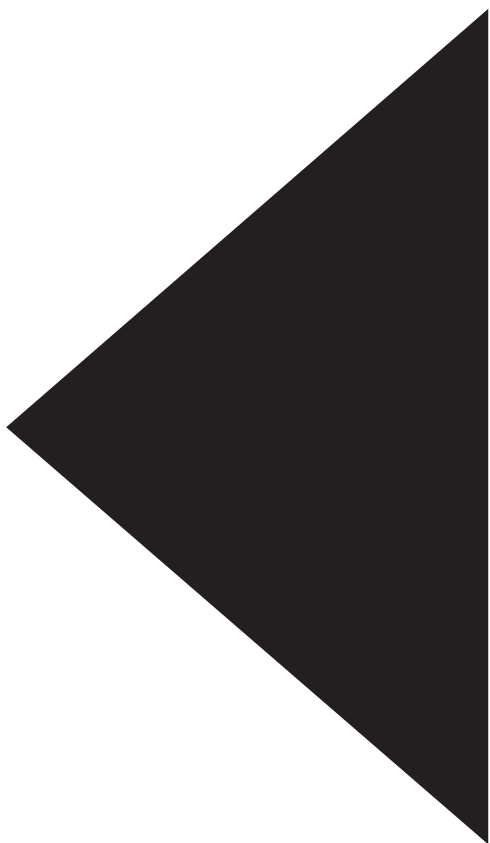
13 Yulchonsandan 4-ro, Haeryong-myeon, Suncheon-si, Jeonnam
(#213, 2F, Jeonnam Techno Park)

Factory

203-59 Yulchonsandan 2-ro, Yulchon-myeon, Yeosu-si, Jeonnam

Phone

Phone: (061)743-5333 / Fax: (061)743-5331 / Website: www.elsys.kr



COMPANY PROFILE